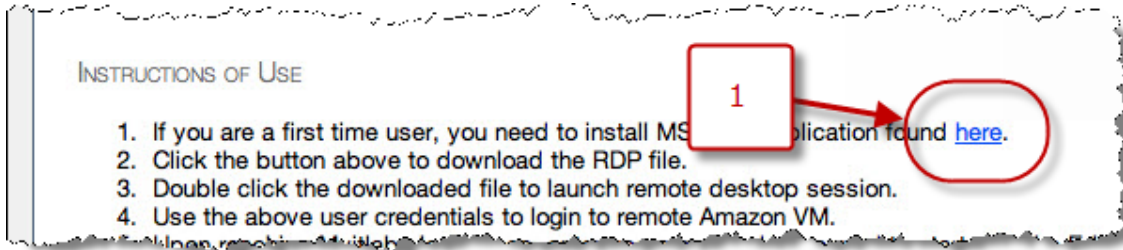


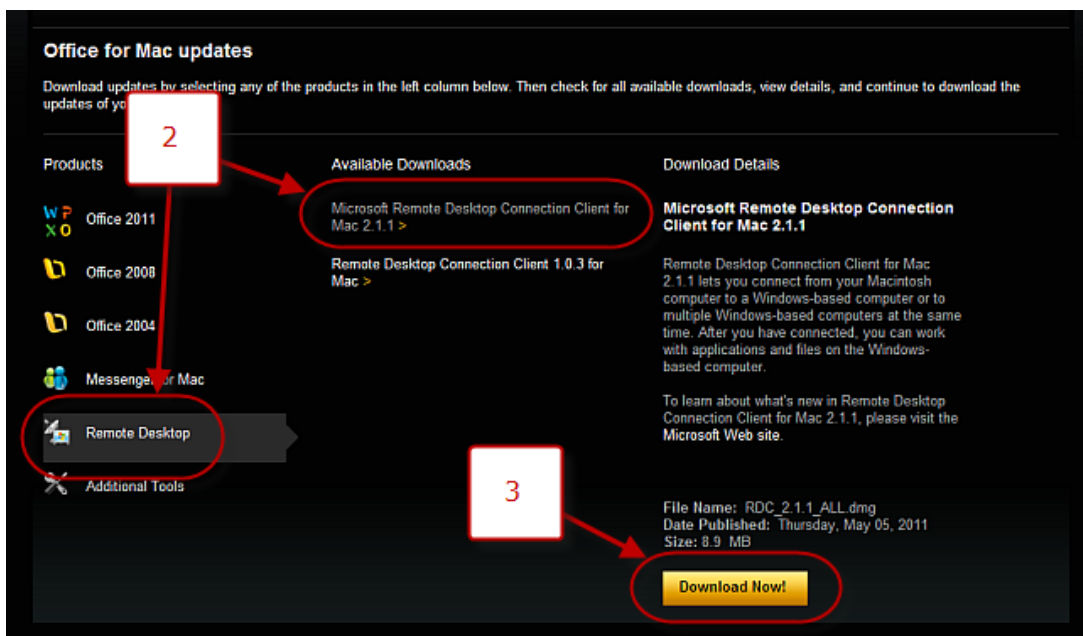
MAC COMPATIBILITY SOLUTION

Before you run the Mac compatibility solution, you must first register for MyITLab. To run MyITLab Mac solution, please log in [here](#).

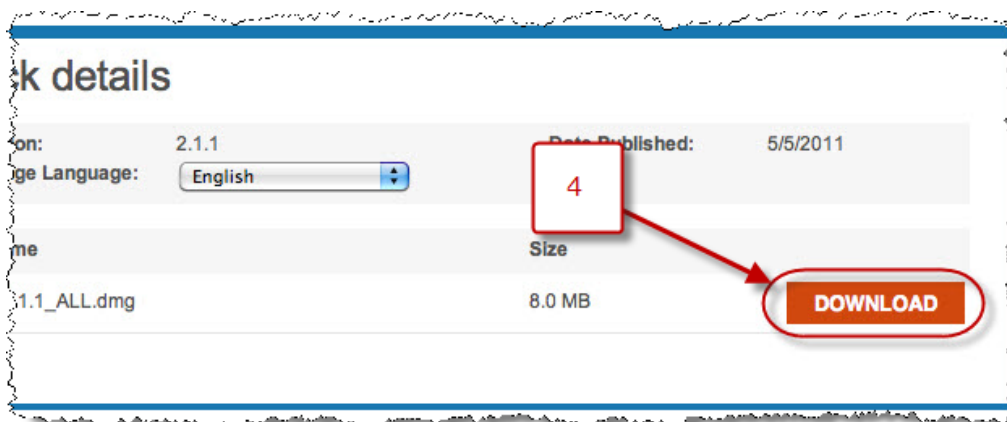
1. After you login to MyITLab, click the link to install the MS RDC application in **Step 1** under Instructions of Use.



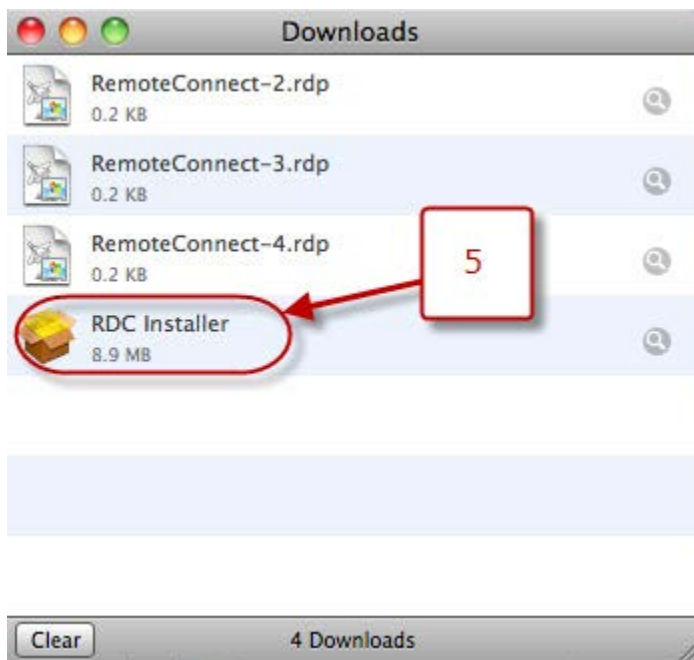
2. The Microsoft site will open in a separate window. Select **Remote Desktop** in the left hand column, then **Microsoft Remote Desktop Connection Client for Mac 2.1.1** from the Available Downloads.



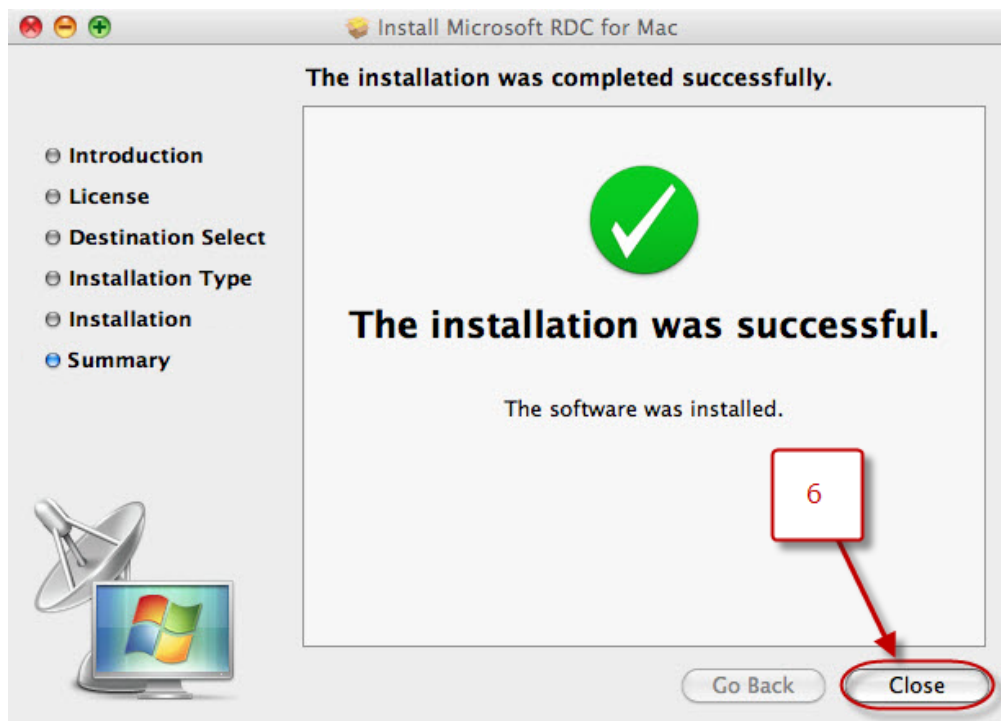
3. Click **Download Now!**
4. At the Microsoft Download Center page, click **Download**.



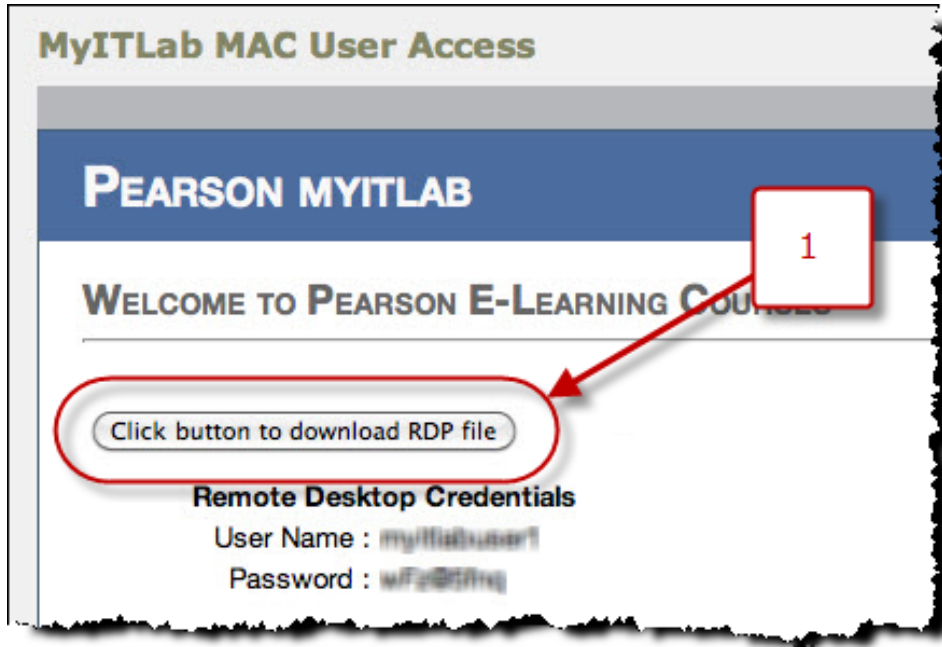
5. You will have a file in your "Downloads Folder" which is located on the lower right hand side of your Mac Dock. (Note: This folder should "bounce" once the file has finished downloading.)
6. Click the file labeled **RDC_2.1.1_ALL.dmg**. Now double-click on the **RDC Installer** file to begin the installation process.



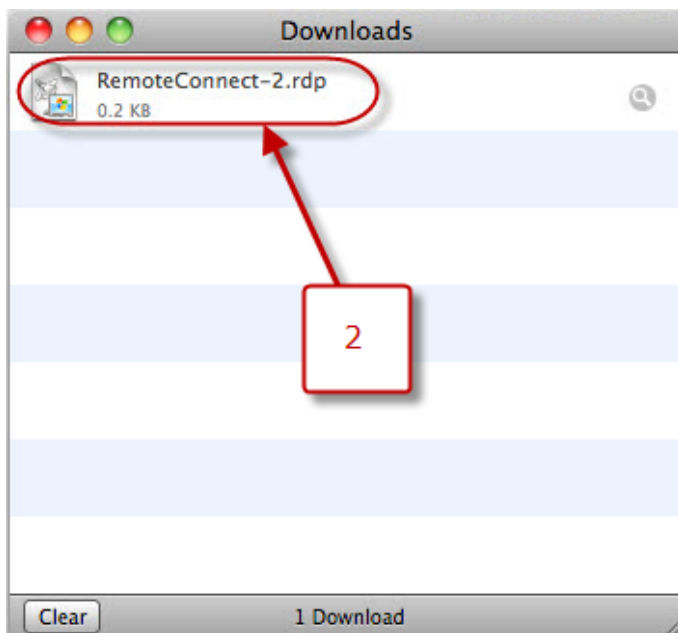
7. Follow the on-screen instructions in the Install Microsoft RDC for Mac window to install the application using the default settings. At the Summary, click **Close**.



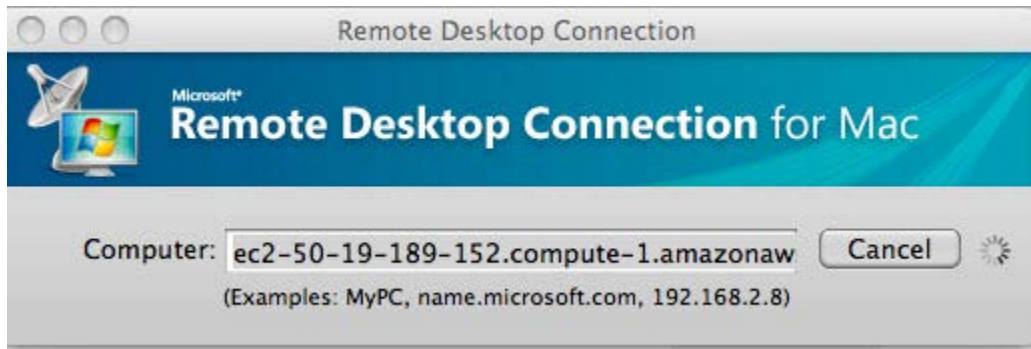
8. Now go back to the Pearson MyITLab MAC User Access webpage you were one before and copy down the **User Name** and **Password** that you see listed and then click the button that says, "**Click button to download RDP file**".



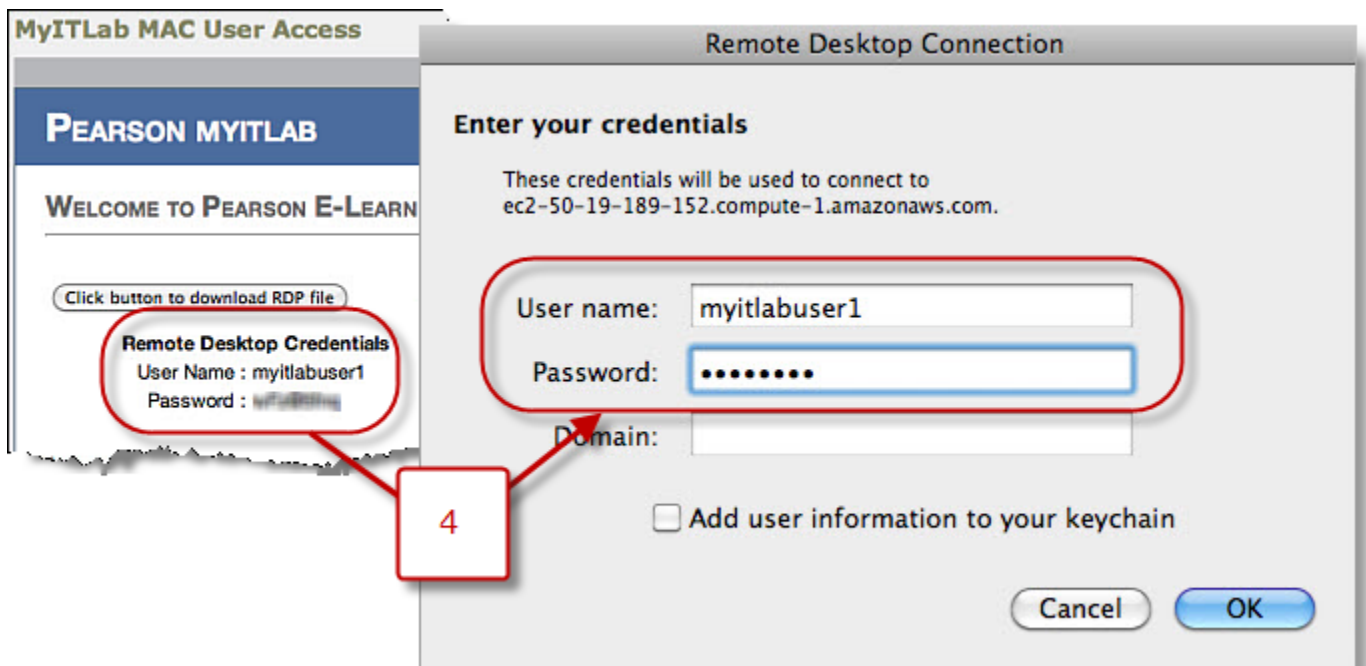
9. Double-click the downloaded file to launch a remote desktop session.



10. Two Remote Desktop Connection windows will open. One will show that a connection is being established.



The other will prompt you to enter your **User Name** and **Password**. Enter the User Name and Password provided on the welcome page under the **Remote Desktop Credentials** (see image below) heading to log in to remote desktop connection. You do **NOT** need to enter a Domain Name. You do **NOT** need to check the box for "user information to your keychain".



11. A new window will appear - click Connect to begin your MyITLab session.

12. Upon reaching the MyITLab login page, enter your MyITLab username and password to access the web site.

Note: Your MyITLab username and password are different from those used in step 10. If you have forgotten your MyITLab username and password, you can recover them at <https://register.pearsoncmg.com/forgotlogin/forgotLogin.fl>.

Each time you use MyITLab on your Mac, you will need to repeat steps 8 – 11 above.

Please be aware that when using a remote desktop session, one session will last for 90 minutes, after which you will automatically be logged out.

